



# Light Plot

## Lady Windermere's Fan

Revised: 4/17/12

Director:  
Paul Mason Barnes

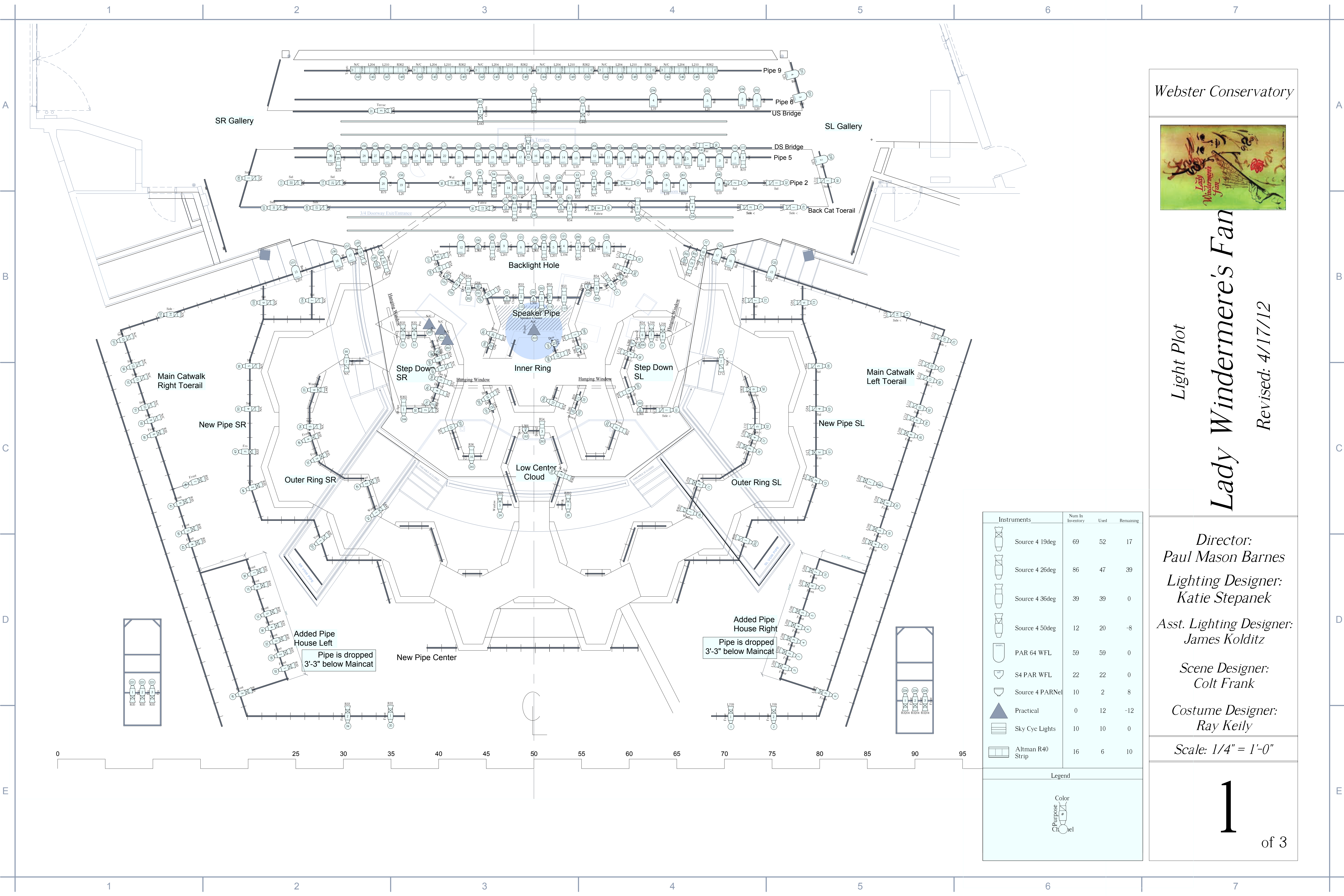
Lighting Designer:  
Katie Stepanek

Asst. Lighting Designer:  
James Kolditz

Scene Designer:  
Colt Frank

Costume Designer:  
Ray Keily

Scale: 1/4" = 1'-0"



Instruments	Num In Inventory	Used	Remaining
Source 4 19deg	69	52	17
Source 4 26deg	86	47	39
Source 4 36deg	39	39	0
Source 4 50deg	12	20	-8
PAR 64 WFL	59	59	0
S4 PAR WFL	22	22	0
Source 4 PARNet	10	2	8
Practical	0	12	-12
Sky Cye Lights	10	10	0
Altman R40 Strip	16	6	10

Legend

Color Purpose

Pipe is dropped 3'-3" below Maincat

Pipe is dropped 3'-3" below Maincat

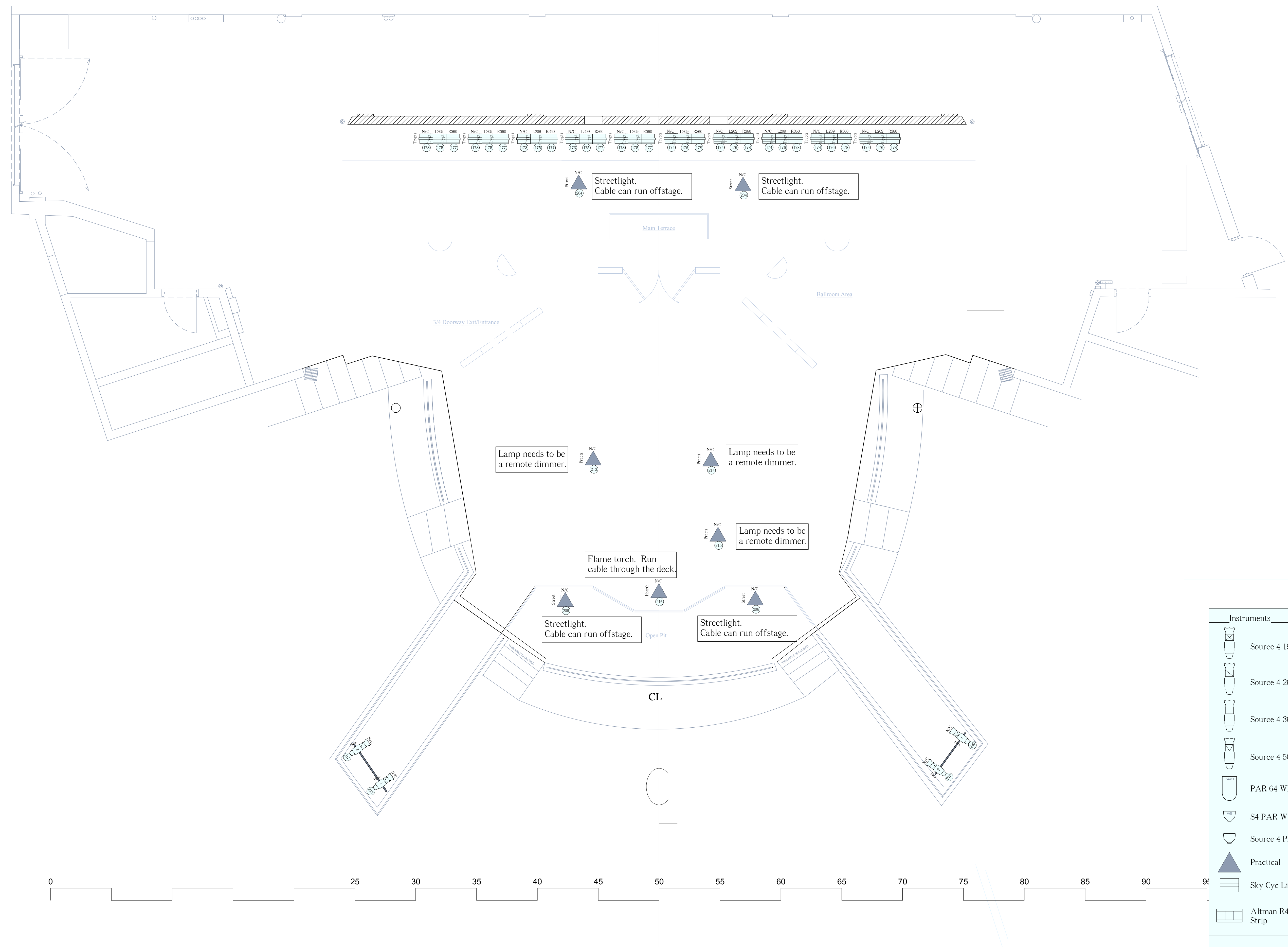


*Deck Electrics*  
**Lady Windermere's Fan**

Revised: 4/17/12

*Director:*  
**Paul Mason Barnes**  
*Lighting Designer:*  
**Katie Stepanek**  
*Asst. Lighting Designer:*  
**James Kolditz**  
*Scene Designer:*  
**Colt Frank**  
*Costume Designer:*  
**Ray Keily**

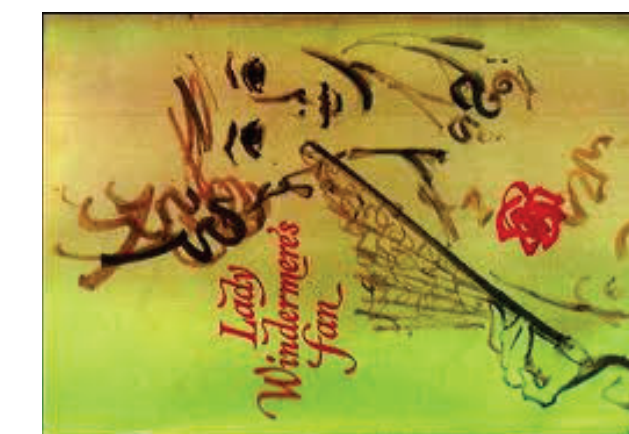
Scale: 1/4" = 1'-0"



Instruments	Num In Inventory	Used	Remaining
Source 4 19deg	69	52	17
Source 4 26deg	86	47	39
Source 4 36deg	39	39	0
Source 4 50deg	12	20	-8
PAR 64 WFL	59	59	0
S4 PAR WFL	22	22	0
Source 4 PARNel	10	2	8
Practical	0	12	-12
Sky Cyc Lights	10	10	0
Altman R40 Strip	16	6	10

Legend

Color  
Purpose  
Cl  
el



# Hanging Plot Lady Windermere's Fan

Revised: 4/11/12

*Director:*  
Paul Mason Barnes

*Lighting Designer:*  
Katie Stepanek

*Asst. Lighting Designer:*  
James Kolditz

*Scene Designer:*  
Colt Frank

*Costume Designer:*  
Ray Keily

Scale: 1/4" = 1'-0"

